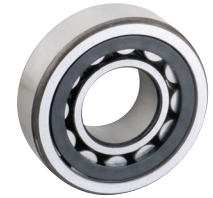


# Bearings

**SCHAEFFLER**



## Single Row Cylindrical Roller Bearing



**Features:**

- Locating bearing
- Can be dismantled
- Complies with RoHS restrictions on the use of certain hazardous substances in electrical and electronic equipment

**Removable Inner Ring – Straight**

**Cage Material:** Brass/Bronze

I.D. (mm)	O.D. (mm)	Width (mm)	Order No.	Mfr. No.	Net Price
50	90	23	<a href="#">MA100950741</a>	NU2210-E-M1-C3	\$252.35
55	100	25	<a href="#">MA100950743</a>	NU2211-E-M1-C3	244.97
60	110	28	<a href="#">MA100950746</a>	NU2212-E-M1-C3	333.06
65	120	31	<a href="#">MA100954759</a>	NU2213-E-M1-C3	299.73
70	125	31	<a href="#">MA100950751</a>	NU2214-E-M1-C3	358.76
75	130	31	<a href="#">MA100746136</a>	NU2215-E-M1-C3	465.18
80	170	39	<a href="#">MA100746047</a>	NU316-E-M1-C3	715.58
95	200	45	<a href="#">MA100000679</a>	NU319-E-M1-C3	1,079.94
120	260	55	<a href="#">MA100746085</a>	NU324-E-M1-C3	1,968.62
130	230	40	<a href="#">MA100745979</a>	NU226-E-M1-C3	1,536.05
	280	58	<a href="#">MA100950900</a>	NU326-E-M1-C3	2,755.40
140	250	42	<a href="#">MA100950800</a>	NU228-E-M1-C3	1,764.69
180	320	52	<a href="#">MA100950861</a>	NU236-E-M1-C3	3,187.66

## NSK Super Precision Cylindrical Roller Bearing

Super Precision Cylindrical Roller Bearings are designed to specifically handle large radial loads in high speed applications. They are available in a variety of designs, including double row and single row options, to suit various applications. In addition, a standard lube groove and hole feature is available along with tapered and nontapered bores. When combined with Super Precision Angular Contact Thrust Bearings, the Super Precision Cylindrical Roller Bearings meet the high rigidity requirements of many machine tool spindle applications.



Single Row

**Features:**

- Complies with RoHS restrictions on the use of certain hazardous substances in electrical and electronic equipment

**Applications:**

- Machine tool spindles for float and high radial loadings
- Designed for exact positioning of the ball screw in a variety of machine tools

**Single Row Cylindrical Roller Bearing**

I.D. (mm)	O.D. (mm)	Width (in)	Limiting Speed Grease (rpm)	Limiting Speed Oil (rpm)	Dynamic Load Rating (lbf)	Static Load Rating (lbf)	Cage Material: Polyamide		
							Order No.	Mfr. No.	Net Price
40	68	0.591	16,000	18,000	6,100	6,500	<a href="#">MA101511394</a>	N1008BTCCG5P4	\$603.90
45	75	0.630	14,000	16,000	7,300	8,000	<a href="#">MA101495847</a>	N1009BTCCG5P4	569.69
50	80	0.630	13,000	15,000	7,300	8,200	<a href="#">MA102137982</a>	N1010BTCCG5P4	599.28
55	90	0.709	12,000	13,000	8,500	9,800	<a href="#">MA101402751</a>	N1011BTCCG5P4	625.31
60	95	0.709	11,000	12,000	9,000	10,900	<a href="#">MA101540455</a>	N1012BTCCG5P4	683.88
65	100	0.709	10,000	12,000	9,300	11,500	<a href="#">MA102081657</a>	N1013BTCCG5P4	695.92
70	110	0.787	9,500	11,000	13,100	15,900	<a href="#">MA101419718</a>	N1014BTCCG5P4	786.88
75	115	0.787	9,000	10,000	13,400	16,800	<a href="#">MA101444899</a>	N1015BTCCG5P4	792.64
80	125	0.866	8,500	9,500	16,300	20,400	<a href="#">MA102073826</a>	N1016BTCCG5P4	817.54
85	130	0.866	8,000	9,000	16,800	21,500	<a href="#">MA101104178</a>	N1017BTCCG5P4	864.23
90	140	0.945	7,500	8,500	19,800	25,800	<a href="#">MA101517154</a>	N1018BTCCG5P4	956.64
95	145	0.945	7,100	8,000	20,400	27,100	<a href="#">MA101518858</a>	N1019BTCCG5P4	994.33
100	150	0.945	6,700	7,500	20,900	28,200	<a href="#">MA101517744</a>	N1020BTCCG5P4	1,041.71

Continued on next page.



**Don't Forget...**

For more information on Bearings Facts, refer to the Technical Reference section of this catalog.

**See the BLUE pages i21-i22.**

